

GW-WIFI-01

IQRF WiFi Gateway

User's Guide



Smarter Wireless. Simply.

Description

GW-WIFI-01 is an IQRF gateway for connection between IQRF and WiFi networks allowing remote monitoring, data collection and control of IQRF network.

The gateway communicates outside the IQRF network via WiFi. Configuration is possible via internal www server, IQRF IDE or SD card.

GW-WIFI-01 allows communication with IQRF IDE to configure internal TR module and simply create an IQRF network. It is fully compatible with the DPA protocol. Non-DPA applications are supported as well.



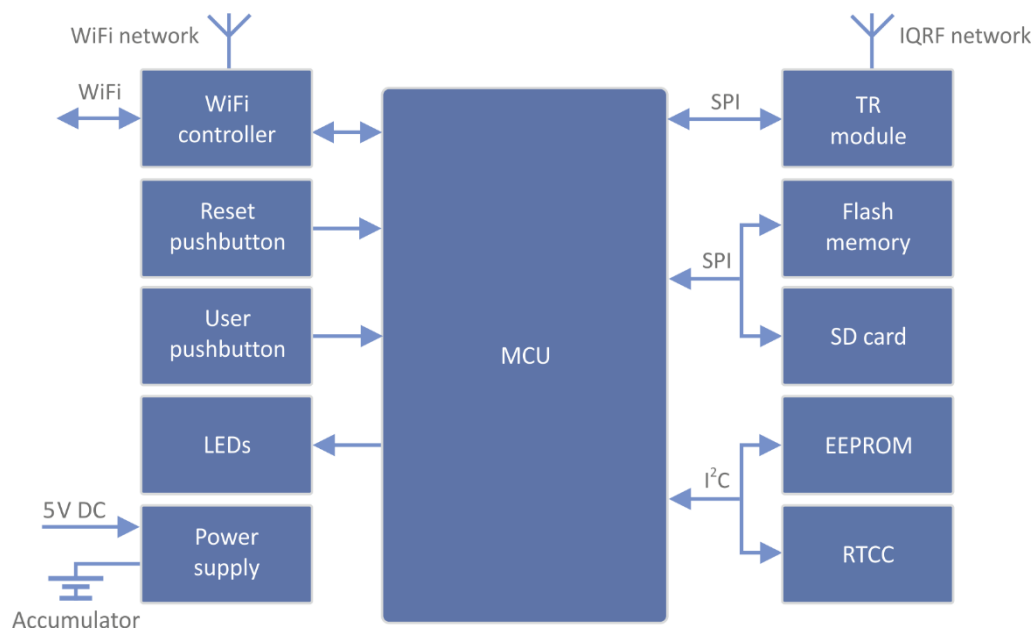
Key features

- HTTP client for communication with IQRF Cloud server
- HTTP server for remote management
- UDP server/client for communication with IQRF network
- DDNS support
- SNTP client for getting date and time from Internet
- DHCP server/client for automated getting of IP address
- NBNS server for using names instead of IP addresses
- RTCC (real time clock/calendar)
- Firmware upgrade via web server / SD card
- Upgrade of application in internal TR module via web server / IQRF IDE / SD card
- DPA and IQRF IDE compatible

Applications

- Remote monitoring and control
- Data acquisition / collection
- Datalogger, IQRF Cloud supported
- Interface to building / home automation
- Connection of more IQRF networks to single PC
- DPA as well as non-DPA applications supported

Block diagram



This gateway can be used either with TR as well as with DCTR transceivers. For simplicity, only TR is mainly used further on throughout this document.

Information contained in this publication regarding device applications and the like is provided only for your convenience and may be superseded by updates. It is your responsibility to ensure that your application meets with your specifications.

IQRF Tech MAKES NO REPRESENTATIONS OR WARRANTIES OF ANY KIND TO STATED CONDITION, QUALITY, PERFORMANCE, MERCHANTABILITY OR FITNESS FOR PURPOSE and disclaims all liability arising from this information and its use. Use of IQRF Tech devices in life support and/or safety applications is entirely at the buyer's risk, and the buyer agrees to defend, indemnify and hold harmless IQRF Tech from any and all damages, claims, suits, or expenses resulting from such use. No licenses are conveyed, implicitly or otherwise, under any IQRF Tech intellectual property rights.

Electrical specifications

(Typical values unless otherwise stated)

Power supply	5.0 ± 0.35 V DC
Accumulator	Li-Ion, 3.7 V, 700 mAh
Supply current	
Off	6 µA
Sleep	85 mA
On	250 mA (not charging), 310 mA max. (charging)
Charge current	215 mA max.
Accumulator operating hours	~ 2 hours
Temperature range	
Operating	0 °C to +60 °C
Storage	10 °C to +20 °C (recommended)
IQRF	
Frequency bands	868 MHz or 916 MHz (SW configurable)
RF output power	According to TR module, programmable in 8 steps
TR module	(DC)TR-72DA or DCTR-52DA
Antenna	PCB antenna built-in TR module
EEPROM	24AA16-I/MC, 16 Kb, 1 000 000 erase/write cycles min.
Flash memory	SST25VF080B, 8 Mb, 100 000 erase/write cycles typ.
SD card	Up to 2 GB
WiFi	802.11g
USB	Custom class
Dimensions	87 mm x 62 mm x 26 mm
Weight	70 g

Absolute maximum ratings

Stresses above those values may cause permanent damage to the device. Exposure to maximum rating conditions for extended periods may affect device reliability.

Supply voltage (VCC)	5.5 V
Storage temperature	-20 °C to +60 °C

Hardware

Main components are: 32b microcontroller, WiFi module, EEPROM memory, serial Flash memory, SD memory card, IQRF transceiver module with antenna and RTCC.



Power supply

GW-WIFI-01 should be supplied via standard micro USB connector by external stabilized 5 V DC, e.g. from the power source delivered with the GW or from USB interface. The accumulator is shared for RTCC as well as other circuitry. It is intended for backup supply only.

Power modes

- On** Operational mode. The GW is fully functional. If external power supply is connected, the accumulator is charged (until being full). If external power supply is not connected, the GW is supplied from the accumulator. Complete GW initialization is performed when switching to On mode (either from Off or Sleep).
- Sleep** Power saving mode. It is only available if external power supply is connected. TR as well as WiFi modules are disabled, no communication is possible. The accumulator is charged (until being full).
- Off** It is only available if external power supply is disconnected. Except of RTCC, all other circuitry is disconnected from power supply and all other functionality is disabled. RTCC keeps running, powered from the accumulator. The accumulator is not charged.

Switching over to another mode can be controlled by the *Control* pushbutton. See chapter *Pushbuttons*. Additionally, the GW is switched Off automatically if accumulator voltage drops below 3.2 V (when supplied from the accumulator in On mode) or if external power is disconnected in Sleep mode.

WiFi

2.4 GHz UHF band is used.

USB

USB interface enables an interconnection between the GW and a PC with IQRF IDE development software. It is intended for uploading the application code into internal TR transceiver, debugging the application and GW configuration using the *GW Tool* (a SW component of IQRF IDE for managing IQRF gateways).

Pushbuttons

Both Reset and Control pushbutton functionality is fixed and can not be changed in application program.

Control

Short press (< 1 s):	No effect
Long press (1 s to 10 s):	GW off
Long press (> 10 s):	Restore the factory settings of the gateway. (After 10 s all LEDs get off to indicate that the factory setting was restored.)

Reset

Reset button can be pressed by a pin through the hole in the case. It is intended to reset the gateway (equally to switching the GW off and on). Current GW configuration stays unchanged. For reinitializing the GW (to restore the factory settings), use menu *Maintenance* › *Factory Defaults* at Web server or user pushbutton.

LEDs

See *Appendix 1 – LED indication*.

RF

(DC)TR-72DA or DCTR-52DA wireless transceiver module is used for IQRF connectivity. Antenna is built in TR module.

EEPROM

Internal serial EEPROM is intended to store the data for GW configuration. It is not available for user application SW.

Flash memory

Log data is stored in circular buffer in Flash memory. When it is full and a subsequent write is performed, then it starts overwriting the oldest data.

There is 252 KB dedicated to IQRF RX data and 128 KB for IQRF TX data and same size for System log.

The number of records of IQRF RX/TX data depends on the parameter `Packet size`, which define how many payload data bytes is dedicated for every data record. For default setting (`Packet size = 64 B`) there is 3308 positions for IQRF RX and 1680 positions for IQRF TX. For System log there is always 6553 positions in the buffer.

The actual size of the data log is the `Packet size + 14 B`, where the additional 14 bytes are used for saving date, time and index of the log. In this way the user can calculate actual number of positions in the buffer.

Data volumes and recording frequency must be taken in account with respect to the Flash memory endurance.

When the `Packet size` is changed in the GW settings, all logs are cleared.

Case

Caution: It is not allowed to open the GW case otherwise the device may be damaged.

Operation

Start up

GW-WIFI-01 is turned on by connecting a USB power supply or by pressing the *Control* button to be supplied from internal accumulator (when no external power source is connected).

Initialization

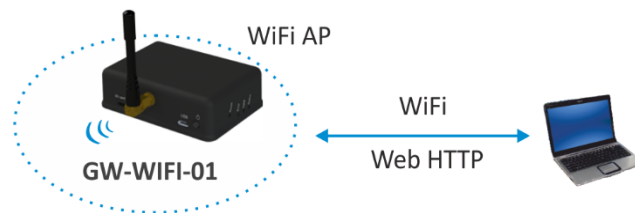
After the start-up, the GW checks its own hardware first. If there is no critical error it starts to initialize WiFi connection. When a critical error occurs, the execution does not continue and the error code is indicated by LEDs.

Communication

The size of payload IQRF data transmitted between the GW and the IQRF network is limited to 64 B in both directions. GW-WIFI-01 can work in the following modes:

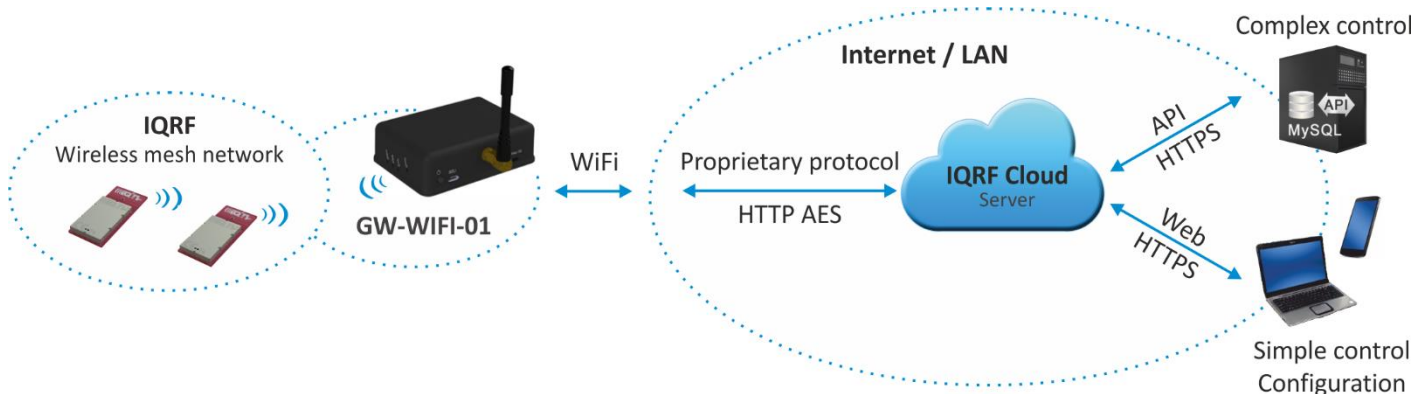
WiFi Access point

Special service mode intended to WiFi interface configuration.



GW-WIFI-01 works in WiFi access point mode when it is started for the first time after delivering from the factory or after restoring the factory defaults (by the *Factory defaults* pushbutton or via the web interface). Then, similarly as a WiFi router, the GW allows to connect a WiFi device. This connection is only intended to configure the GW for subsequent operation, e.g. selecting the operation mode (datalogger or gateway) and setting other GW parameters (selected WiFi network, passwords etc.). After the configuration and restart the GW starts to work as a WiFi client and attempts to connect the WiFi network specified in the configuration.

WiFi client - Datalogger mode

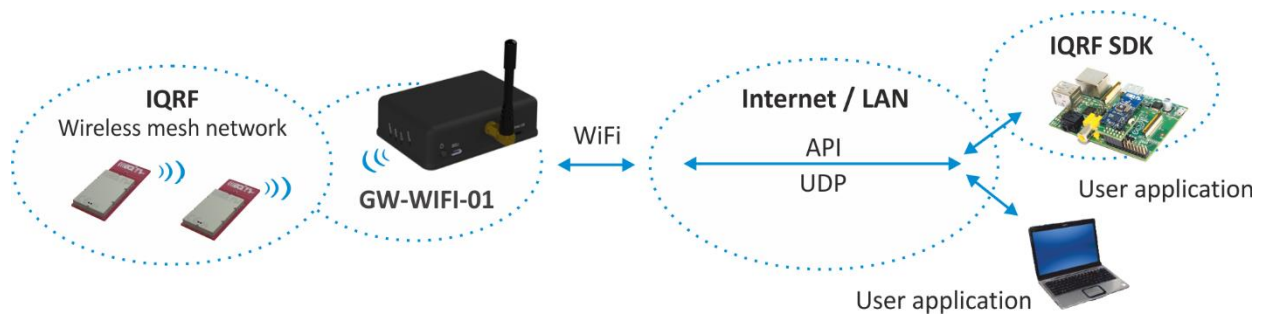


All incoming IQRF data (IQRF RX) is stored and logged in internal Flash memory. When used with IQRF Cloud, the logged data is transmitted to the Cloud server always after the Cloud period elapsed. See chapters *IQRF IDE – GW Tool* and *Web server*.

Data to be sent to IQRF (IQRF TX) is stored in internal Flash memory. When used with IQRF Cloud, the data is stored in the Cloud server first, transferred to the GW always after the Cloud period elapsed and then forwarded to IQRF network.

If the communication between the GW and the Cloud server failed, the GW indicates an error.

WiFi client – Gateway mode



Direct connection between IQRF networks and remote device via UDP channel is established.

The communication uses a specific application protocol, see chapter *Application protocol for UDP channel*.

Errors in communication between the GW and the remote device should be solved by the user application.

Using IQRF IDE

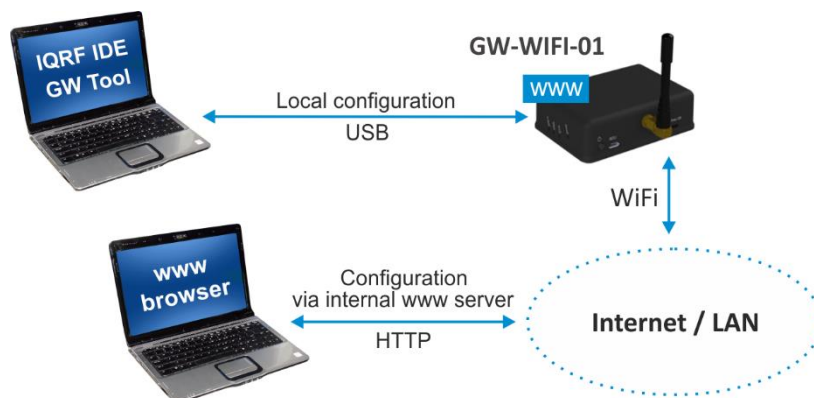
The IQRF IDE **GW Tool** is intended for GW configuration, checking of operational and error states and for access to the datalogger. When using the GW Tool, the communication via WiFi is enabled.

Additionally, IQRF IDE can be used similarly as for the CK-USB-04(A): uploading the code into TR transceiver, configuration of TR module inside the GW (including Access password and User key, see IQRF OS v4.xx User's guide, chapter *Encryption*), debugging of the application, using the IQMESH Network manager etc. In this mode the communication via Ethernet is disabled.

Internal web server

To get connected to the internal web server, it is necessary to know IP address of the GW or the GW host name (if the network supports the NBNS, i.e. within the LAN only). Internal web server is used for GW configuration (manually in graphic environment or by loading a binary file *.gwcfnfg), TR programming (*.hex, *.iqrff), TR configuration (*.trcnfg, excluding Access password and User key for encryption) and FW upgrading (gwwifi.hex). When uploading any of these files, it is necessary to have SD card plugged in the GW card slot, otherwise the operation can not be completed.

GW configuration



GW configuration is possible via internal www server, IQRF IDE or (especially for troubleshooting) via SD card.

SD card file structure

The SD card is intended for development, service and maintenance. It should be accessed primarily by the GW while direct writing by the user (externally by a standard SD card reader/writer) is recommended for exceptional purposes only. The standard way to perform required changes is using the internal web server.

The SD card uses the following folders:

- **Root** The root directory is intended for a new FW (`gwwifi.hex` file) to be used for upgrade.
- **TRUPLOAD** The folder intended for files to be uploaded into the TR module (`*.hex`, `*.iqrif`, `*.trcnfg`).
- **GWCNFG** The folder intended to record a new GW configuration (`*.gwcnfg`).
- **BACKUP** The folder intended for current GW configuration (`gw.gwcnfg`).

When using the web server, all folders and files are created automatically when required. In case of external direct writing the required folders must be created by the user. Files not necessary any more are automatically deleted after the usage.

System log

All important events are logged. System logs can be read using IQRF IDE GW Tool.

Date and time

GW-WIFI-01 contains a real time clock/calendar (RTCC). Date and time are synchronized using SNTP/Cloud server.

TR module data exchange

Data between the internal TR module and the GW memory is transferred bidirectionally via SPI (using the `bufferCOM` memory array inside the TR module). Therefore, the application in TR must have the SPI communication activated. When using DPA, a **hardware profile with SPI interface must be uploaded in TR**. Such plug-in is uploaded from the factory. The maximum SPI packet length is 64 B.

LAN services

- **HTTP client** Communication with IQRF Cloud server (using 128 b AES encryption)
- **HTTP server** Web pages for remote management via a common browser
- **HTTP client** Getting and updating of public address from DDNS
- **UDP server/client** Communication with IQRF network and for remote GW management
- **SNTP client** Getting date and time from time server
- **ICMP server** Allowing "ping" to GW from a remote host
- **DHCP server** For IP addresses dedicated to one client (when the GW works in *Access point* mode)
- **DHCP client** Automated getting of IP address from the DHCP server
- **NBNS server** For using names instead of IP addresses within the LAN

GW identification

MAC address

Every device has a unique MAC address in the format 00 1F D5 xx xx xx, where:

- 00 1F D5 is the OUI dedicated to MICRORISC s.r.o.
- xx xx xx is a device serial number

Actual MAC address is printed on the label at the bottom of the GW-WIFI-01 case.

ID

Another unique number (manufacturer's identification) used to identify the gateway by IQRF IDE, the IQRF Cloud server and user applications utilizing the Cloud via API.

For GW-WIFI-01: ID = 10 xx xx xx, where xx xx xx are last 6 digits of the MAC address.

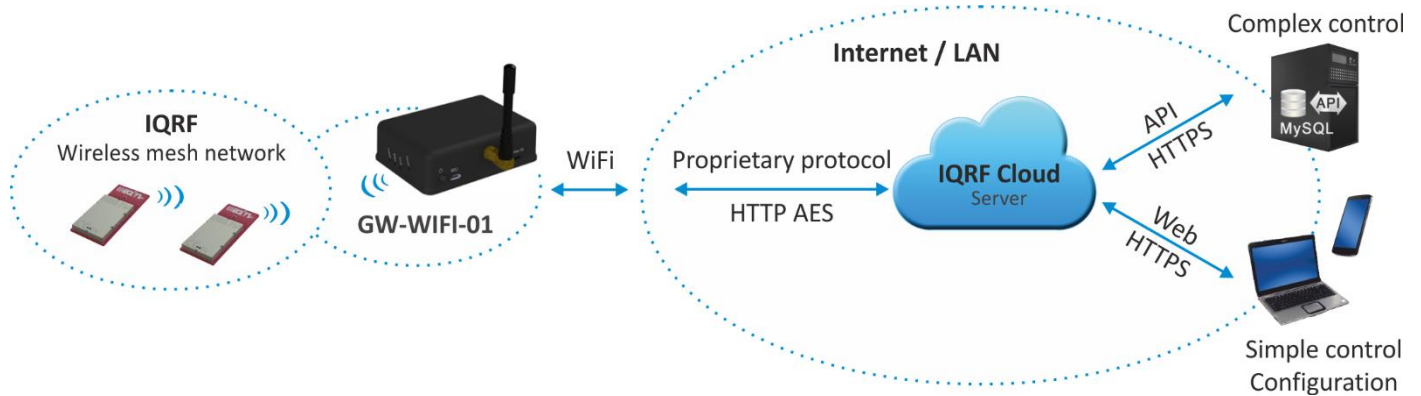
NBNS Name

iqrf-xxxx, where xxxx are the last 4 digits of the MAC address.

IQRF Cloud

The IQRF Cloud provides an effective way to exchange data between IQRF wireless device(s) and a user superordinary system implemented by a higher level platform (e.g. PHP, JavaScript or web interface) and connected via Internet or a LAN. As an interface to IQRF, the GW-WIFI-01 or another IQRF gateway providing Internet connectivity (Ethernet, GPRS or WiFi) is intended.

An IQRF Cloud server is available on [http\(s\)://cloud.iqrf.org](http(s)://cloud.iqrf.org) provided by CIS (Complete Internet Services, s.r.o., an IQRF contractual partner for cloud solutions). Moreover, a licensed version is available for every user of an IQRF gateway preferring to implement and operate one's own IQRF Cloud. Refer to the IQRF Cloud User's Guide for details.

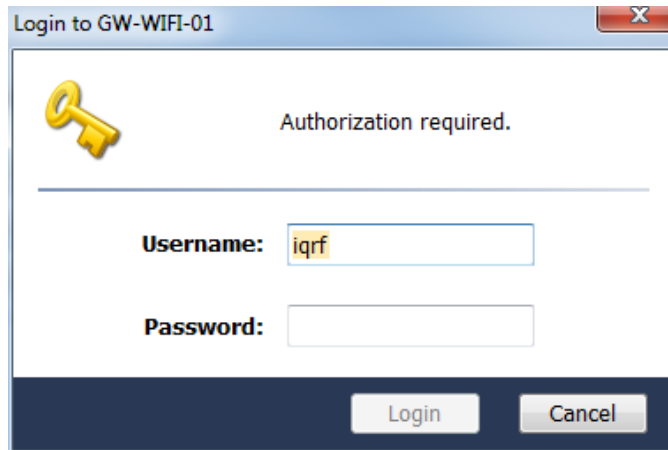


IQRF IDE – GW Tool

IQRF IDE 4.20 and higher is required.

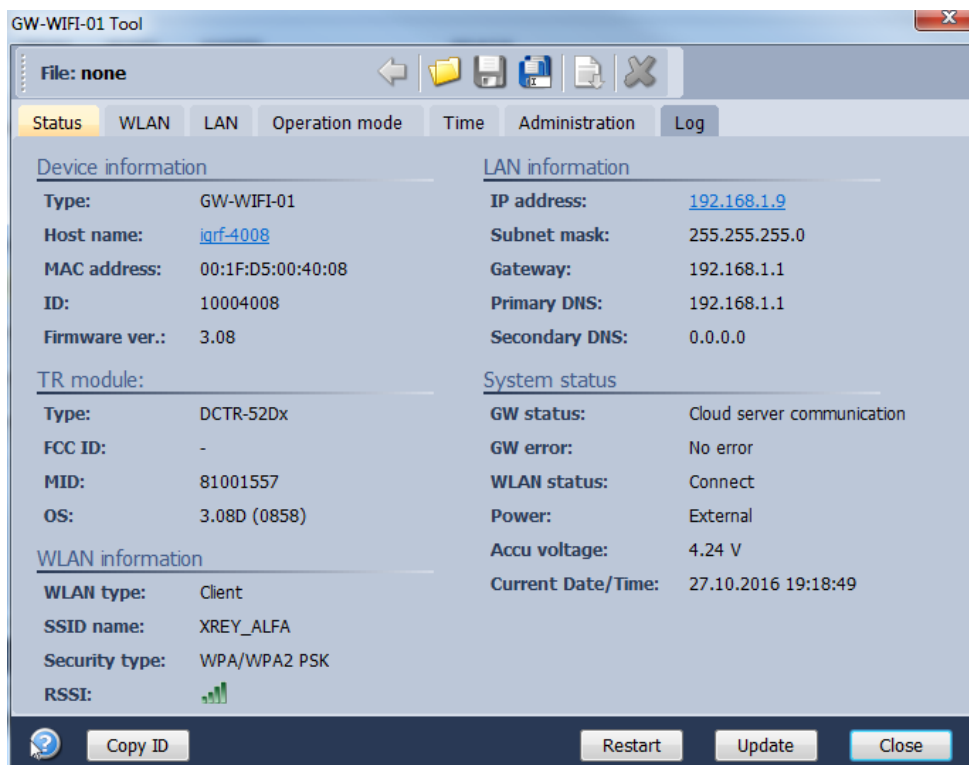
Login to GW Tool

The GW Tool can be invoked from IQRF IDE menu *Tools* → *GW Tool*.



To open the Tool, the username and the password must be entered. Default values are `iqrif` and `iqrif`.

Status



The *Status* tab contains general overview about the gateway status. Several buttons are available to control the GW:

- Copy ID To copy the GW ID to the clipboard
- Restart To restart the gateway
- Update To update the *Status* tab
- Close To close the *GW Tool* window

Device information

- Type Current GW type
- Host name Name identification of GW in Ethernet network (used by NBNS)
- MAC address Globally unique identification of GW – Ethernet interface
- ID Unique identification number of the gateway, provided by the factory
- Firmware ver. Current firmware version

TR module

- Type The type of IQRF TR module inside the gateway
- FCC ID FCC certification identification
- MID Unique IQRF TR module identification number
- OS IQRF OS version (and OS build) of TR module

WLAN information

- WLAN type Displays the mode which the GW currently works in
 - Access point The default set by the factory. It is intended for the first configuration of the GW.
 - Client Standard operation mode
- SSID name For *Client* mode: SSID of the WiFi network which the GW is connected to (or is attempting to connect).
For *Access point* mode: SSID of the WiFi network created by the GW
- Security type Mode of WiFi network security
 - Open
 - WEP
 - WPA / WPA2
- RSSI WiFi signal strength

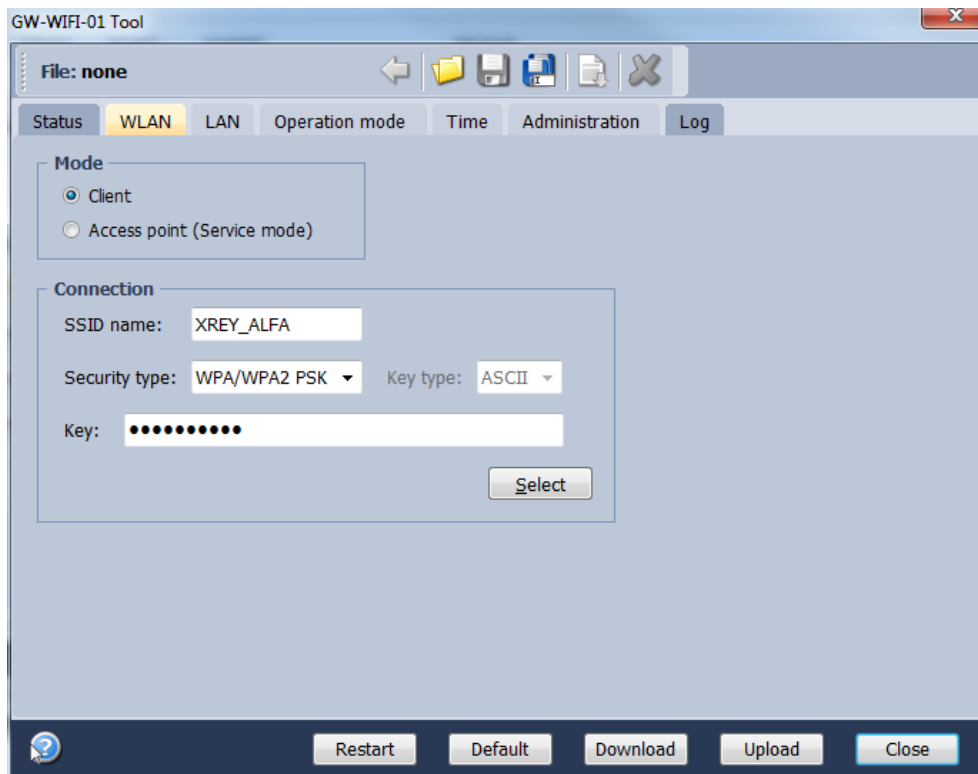
LAN information

- IP address Current IP address of the GW
- Subnet mask Ethernet network address range
- Gateway Main gateway/server of the Ethernet network
- Primary DNS Primary server with DNS service
- Secondary DNS Secondary server with DNS service

System status

- GW status Current operation executed by the gateway:
 - Communication
 - Cloud Server Communication
 - Error
- GW error An error during execution indication:
 - No Error
 - TR SPI Error
 - LAN Error
 - Cloud Server Error
 - SD Card Error
- WLAN status
 - Connected GW is connected to selected WiFi network
 - Disconnected GW is not connected to selected WiFi network (the connection is lost or has never been established at all)
- Power Currently used power supply
 - External
 - Accumulator
- Accu voltage Actual voltage of internal accumulator
- Current Date/Time The date and time used in the gateway

WLAN



The following buttons are available in addition to previous ones:

- **Default** To restore the default configuration
- **Download** To read the configuration from GW
- **Upload** To store the configuration to GW

Mode

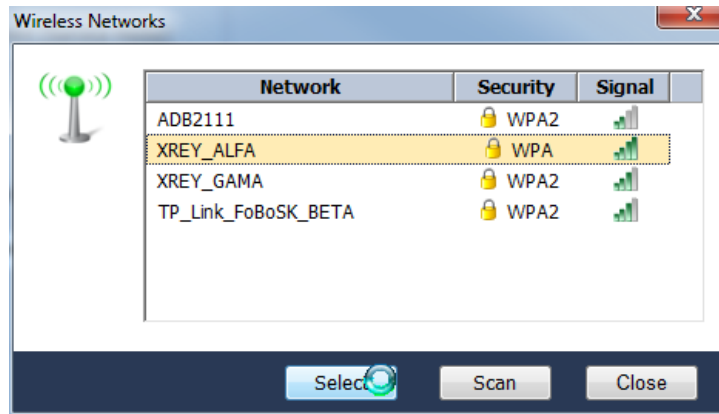
Specifies the operation mode of WiFi module inside the GW

- **Client** Standard operation mode of the GW. In this mode, the GW is connected to the WiFi network according the parameters specified in the *Connection* section.
- **Access point** Intended for initial GW configuration. The default mode preselected from the factory.

Connection

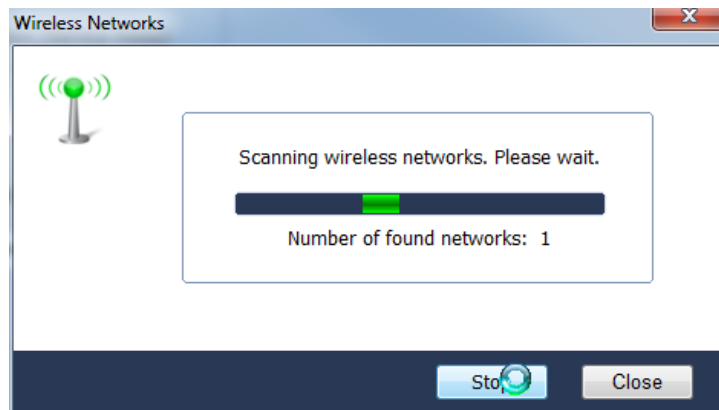
Intended for setting of parameters of WiFi network which the GW is connecting to or which is creating by the GW.

- **SSID name** SSID of WiFi network which the GW is connected to
- **Security type** WiFi network security mode
 - **Open** Not protected network
 - **WEP 64 b** Network protected by the WEP security protocol
 - **WEP 128 b**
 - **WPA / WPA2** Network protected by the WPA or WPA2 security protocol
- **Key type** The format of the key for the WEP type protection.
 - **HEX** In hexadecimal
 - **ASCII** ASCII characters
- **Key** To specify the security key allowing to connect the selected WiFi network
- **Select** The button to check available WiFi networks



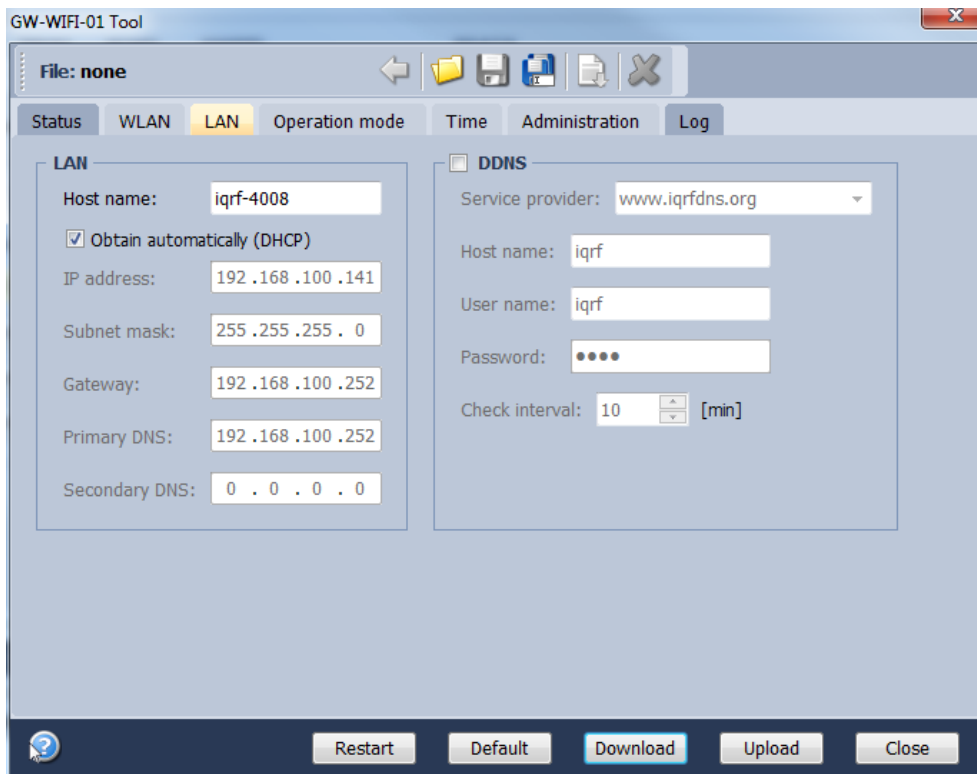
This window displays available WiFi networks, their SSIDs, protection types and signal strengths. Select the desired network by the mouse and click the button *Select*. Parameters of selected network will then be updated in the *Connection* section (see the figure above). Then the access key must be entered there.

The *Scan* button starts searching the available WiFi networks.



The number of detected networks is successively displayed at *Number of found networks* line. The searching can be terminated by the *Stop* button.

LAN



LAN

It allows to set/get the parameters relating to Ethernet connection.

- Host name Name identification of GW in the Ethernet network (used by NBNS). If the main gateway/server offers NBNS service, it is allowed to use this host name instead IP address of GW.
- Obtain automatically (DHCP) If the main gateway/server offers DHCP service, it is allowed to get all LAN parameters automatically (IP address, Subnet mask, Gateway, Primary DNS, Secondary DNS)
- IP address Current IP of the GW
- Subnet mask Ethernet network address range
- Gateway Main gateway/server of the Ethernet network
- Primary DNS Primary server with DNS service
- Secondary DNS Secondary server with DNS service

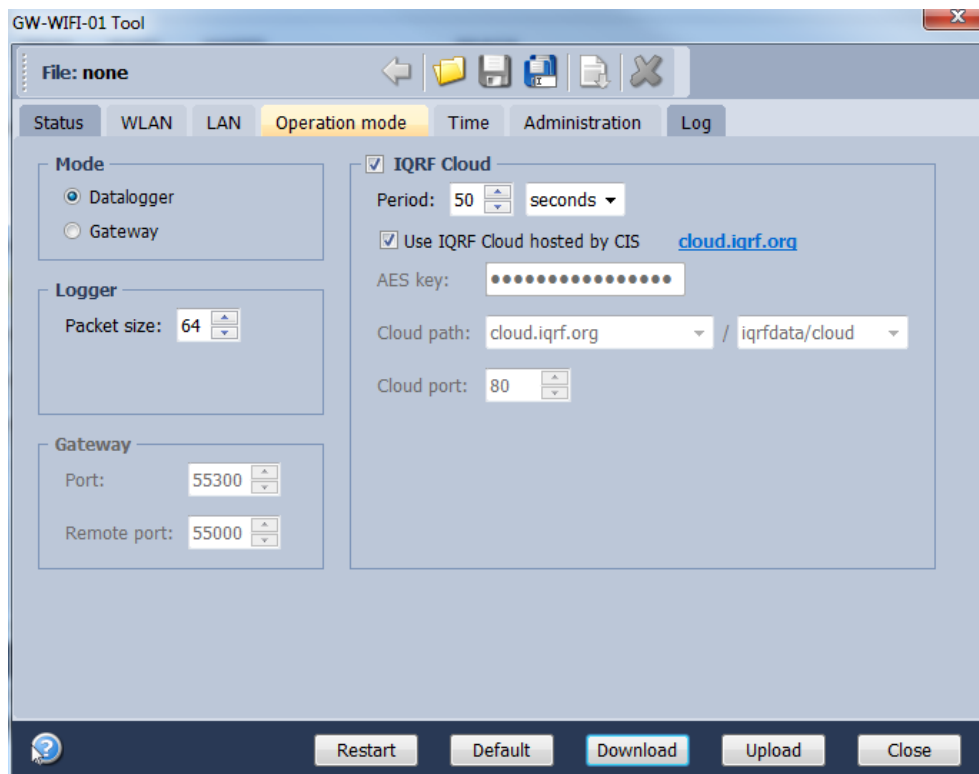
DDNS

DDNS service allows to get public address of network which the GW is assigned in. GW communicates with the DDNS server in checking interval and transmits its current IP address.

- For IQRF DNS:
The user or user application reads the IP address from the service provider server using the ID of the GW.
- For other DDNS servers:
The user or user application accesses the GW using the *Host Name*. Refer to the website of given server.
- DDNS DDNS service activation
- Service provider List of supported DDNS servers
- Host name Name identification of GW within DDNS
- User name DDNS account username
- Password DDNS account password
- Check Interval Communication period between the GW and DDNS server

Operation Mode

The *Operation mode* tab provides the setting of the gateway.



Mode

- Datalogger The datalogger is active. Its content can be read using IQRF Cloud server (if enabled), or IQRF IDE GW Tool.
- Gateway UDP channel is active. It is direct connection to the GW (without IQRF Cloud) using the application protocol described in chapter *Application protocol*. Communication ports can be selected in the *Gateway* field - *Port* and *Remote port*.

Logger

- Packet Size The size dedicated for the data log in the gateway memory. By default, this value is set to 64 B, the same as the maximum size of the IQRF packet. Shorter packets allow to store more data logs. Minimum packet size is 1 B. When an IQRF packet oversized the selected packet size, a part of user data is lost.

When the packet size is changed the content of internal memory is cleared.

IQRF Cloud

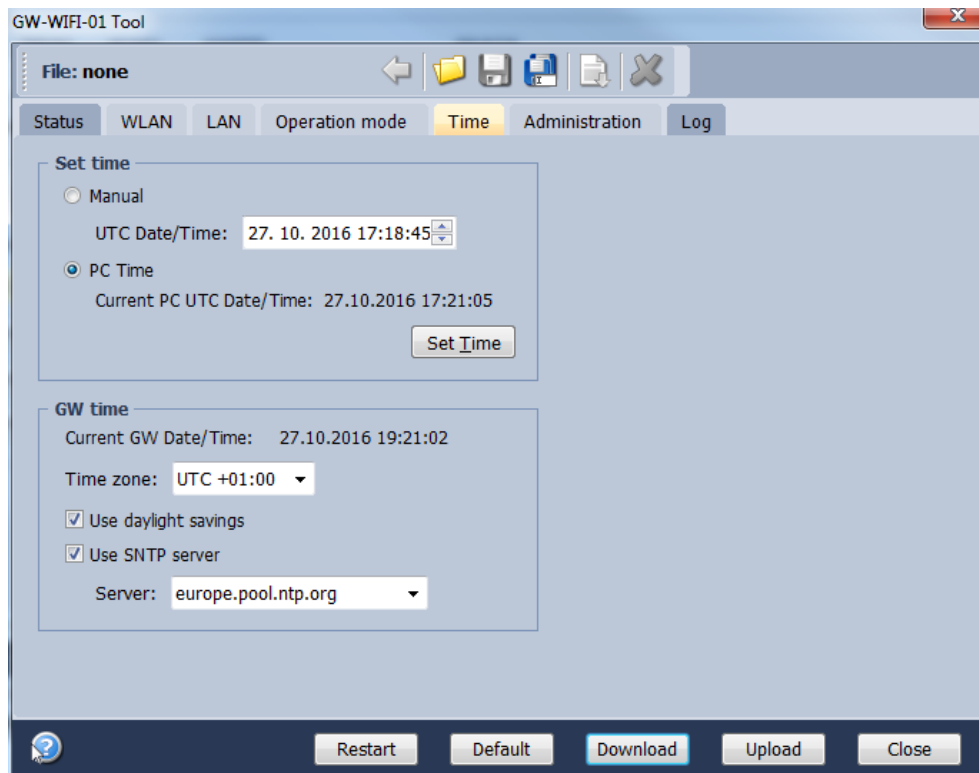
- Period Defines how often the gateway transmits the data to IQRF Cloud server. Allowed values are from 2 s to 24 hours.
- Use IQRF Cloud hosted by CIS The gateway is configured by default to communicate with IQRF Cloud server provided by CIS. Any gateway can also communicate with another IQRF Cloud server provided by anyone else. In such a case, the checkbox must be unchecked and the following fields must be filled.
- AES key Encryption key used for secure communication between the gateway and the IQRF Cloud server. The same key must also be specified at the server side.
- Cloud path The URL address where IQRF Cloud server is hosted. The '/cloud' substring must follow.
- Cloud port The TCP port used. In most cases port 80 is used.

Gateway

- GW Port UDP port for the GW side.
- Remote port UDP port for a remote device side.

Time

GW time and date setup.



Set time

- Manual To setup the time manually
- PC time To upload the date and time from connected PC.

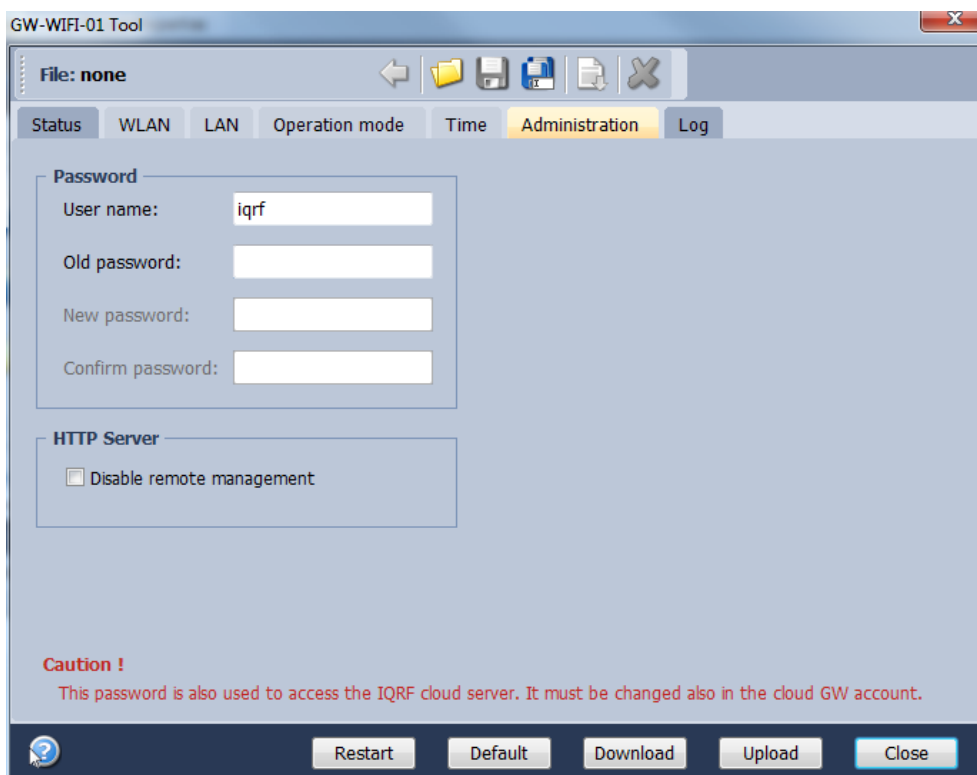
Selected time is transferred to the GW by the *Set Time* button.

GW time

- Current GW Date/Time Date and time currently running in the GW
- Time zone Time zone selection
- Use daylight savings Daylight savings for given time zone selection
- Use SNTP server When activated, the GW time will be synchronized with specified SNTP server time once per 6 hours.
- Server SNTP server selection. IQRF Cloud server is also available for this.

Administration

The user can change the username and the gateway password here. When the password is changed, in order to allow an access the data on the Cloud server it must be changed there too. The change of username has no effect for that. Allowed password length is from 4 to 8 characters. When the username or the password is lost, the user can reset the gateway to factory settings. The default username and password values are iqrf and iqrf.



Password

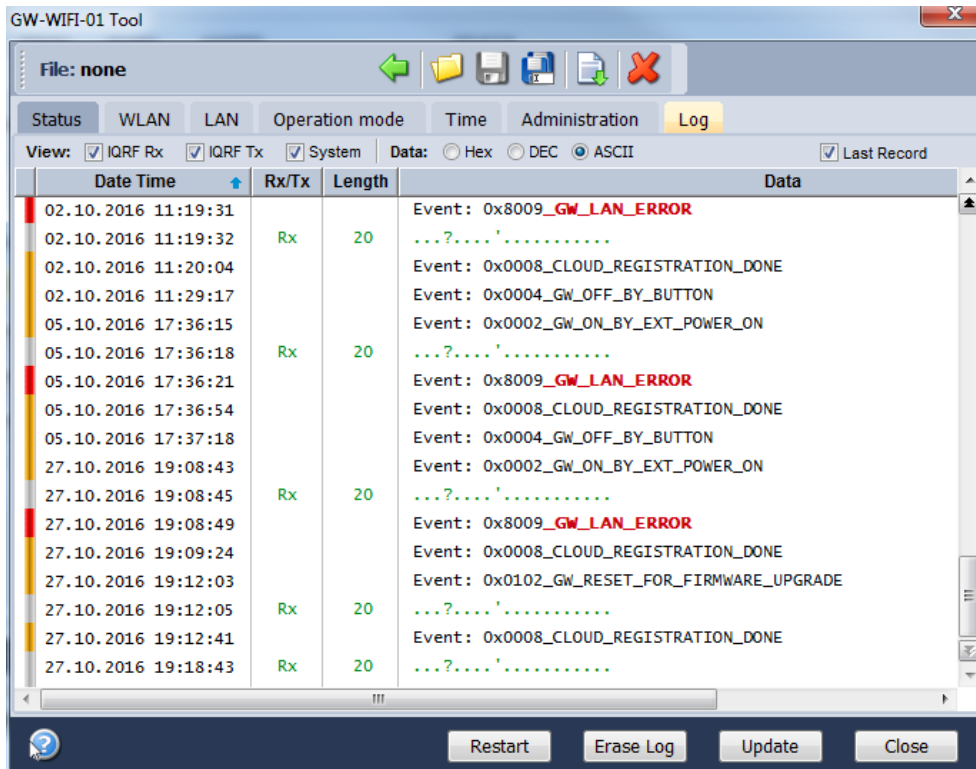
A standard way to change the GW password.

HTTP Server

- Disable remote management Internal web server inside the GW can be disabled. The change takes effect after GW reset. The configuration through IQRF IDE – GW Tool is possible even if this option is disabled.

Log

Transmitted data stored on the Cloud server stays also accessible directly in the GW buffer.



Buttons:

- Restart To restart the GW
- Erase Log To erase the content of the whole GW internal log memory
- Update To read the data from the GW and refresh the Log window
- Close To close the GW Tool window

Three types of logs are stored in the gateway:

- IQRF Rx Data received from IQRF network and transmitted to the Cloud server
- IQRF Tx Data downloaded from Cloud server and transmitted to IQRF network
- System Certain events that occurs during the execution. The user do not usually need to take care about it. Nevertheless it can be helpful in case of nonstandard behavior.

Last Record When selected, the output list is scrolled down to display the last acquired data.

The format of IQRF RX/TX data depends on the user application in TR (e.g. DPA or any user-specific protocol). The format of system log is fixed.

The following system events are logged:

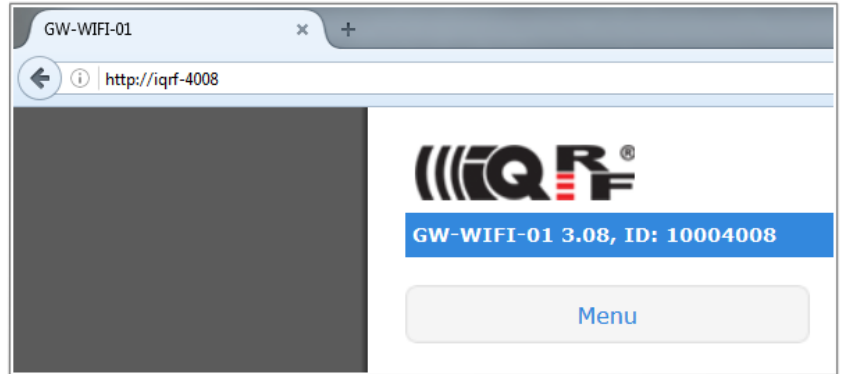
- GW_OFF_BY_BTN
- GW_OFF_BY_LOW_ACCU
- GW_ON_BY_BUTTON
- GW_ON_BY_EXT_POWER_ON
- GW_RESET
- GW_RESET_FOR_NEW_SETTINGS
- GW_RESET_FOR_FIRMWARE_UPGRADE
- GW_LAN_ERROR
- SD_CARD_ERROR
- CLOUD_REGISTRATION_DONE
- CLOUD_LICENSE_DONE
- CLOUD_CONNECTION_ERROR
- CLOUD_REGISTRATION_ERROR
- CLOUD_UPLOAD_ERROR
- CLOUD_DOWNLOAD_ERROR
- CLOUD_DOWNLOAD_CONF_ERROR
- CLOUD_SYSTEM_PACKET_ERROR
- CLOUD_UNKNOWN_PACKET_RECEIVED
- CLOUD_LICENSE_ERROR
- TR_SPI_ERROR

Web server

The web server inside the GW is primarily intended for GW configuration.

Default GW settings predefined by the factory is *Access point* mode and WiFi network with SSID = IQRF-xxx, where xxxx are the last 4 characters of MAC address of the GW. This network is not secured. After connection it is possible to accomplish required configuration via internal web interface.

To access the web server, the IP address of given GW must be known. When accessing from a local network, the domain name 'iqr-xxxx' (where xxxx are last 4 digits of the MAC address) can be used instead of the IP address. Both GW user name and the GW password are preset to 'iqr' from the factory. Every page of the web server has a help.



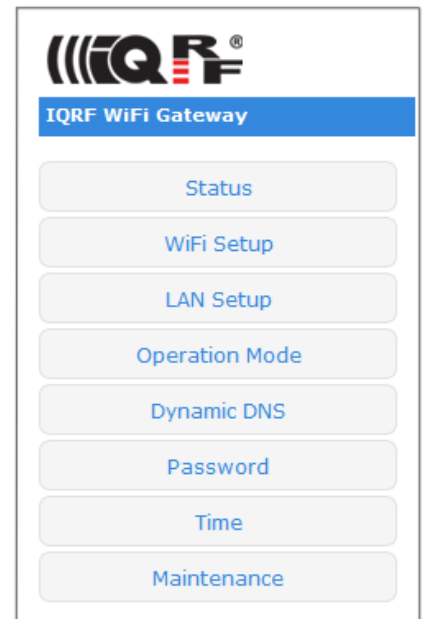
It is recommended to change the user name and it is required to change the GW password as soon as possible, just after the first login to the web server.

Web server can be enabled/disabled in IQRF IDE GW Tool / *Administration*.

Menu

The main menu provides an access to the configuration pages of GW.

- Status Information about the device, current network connection and the GW status.
- WiFi Setup Selecting and setup the WiFi network for connection of the GW as a client. Setup of registration parameters for this network.
- LAN Setup To select the network connection parameters.
- Operation Mode To select the GW mode.
- Dynamic DNS To configure Dynamic DDNS service used to find the public IP address of the GW.
- Password To change the access parameters for the Web server, Cloud server and IQRF IDE.
- Time To set the time and date manually or to activate automatic time synchronization with the selected time server.
- Maintenance For fundamental changes in GW and internal TR functionality.



Status

Device information

Type:	GW-WIFI-01
Host Name:	iqrf-4008
MAC Address:	00:1F:D5:00:40:08
ID:	10004008
Firmware Version:	3.08 (Oct 10 2016)

- Type GW type
- Host Name Name identification within local network (using this name instead of IP address), in the networks where NBNS is supported
- MAC Address Globally unique identification of GW device within Ethernet networks
- ID Unique identification of the gateway within the IQRF Tech product line
- Firmware Version Current firmware version (including the build date)

WiFi information

Mode:	Client (Normal Mode)
SSID Name:	XREY_ALFA
Security Type:	WPA/WPA2

- Mode Current GW mode
- SSID Name For *Client* mode: SSID of WiFi network which the GW is connected to (or is attempting to connect)
For *Access point* mode: SSID of the WiFi network created by the GW
- Security Type WiFi network security mode

LAN information

IP Address:	192.168.1.9
Subnet Mask:	255.255.255.0
Gateway:	192.168.1.1
Primary DNS:	192.168.1.1
Secondary DNS:	0.0.0.0

The network connection parameters set manually or obtained through DHCP.

TR module

Type:	DCTR-52Dx
MID:	8100155D
OS:	3.08D (0858)
Status:	Communication

- Type TR module type inside the GW
- MID Unique IQRF TR module identification number
- OS Current version of IQRF OS (and build version) of TR module
- Status The state of the TR module

System status

GW Status:	Communication
GW Error:	No Error
Power:	External
Accu Voltage:	4.20 V
Current Date/Time:	27/10/2016 19:45:00 Thu

- **GW Status** Current operation executed by the gateway. See chapter System status above.
- **GW Error:** Indicates whether there is an error during execution
- **Power** Power supply type
- **Accu Voltage** Not intended for GW-WIFI-01
- **Current Date/Time** Current time of RTCC inside the GW

WiFi setup

GW-WIFI-01 WiFi interface configuration.

WiFi Information

Mode:	Client (Normal Mode)
SSID Name:	XREY_ALFA
Security Type:	WPA/WPA2

New Connection

There are two possibilities to connect WiFi to the GW:

1. By the *Scan Networks* button: Select a connection from the list of available WiFi networks

Display Scan Results

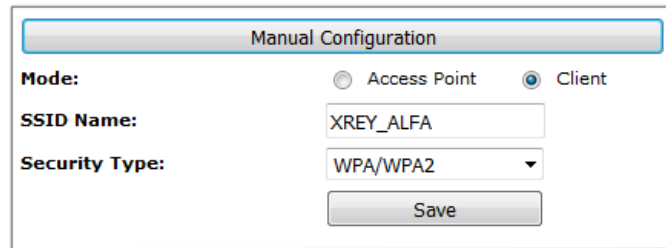
XREY_ALFA	🔒	📶
XREY_GAMA	🔒	📶
TP_Link_FoBoSK_BETA	🔒	📶

If the WiFi network is secured, the access key must be entered.

Please enter your passphrase

Then configuration parameters are stored, the GW is restarted and then automatically attempts to connect selected WiFi network.

2. By the *Manual Configuration* button:



The dialog box titled "Manual Configuration" contains the following fields:

- Mode:** Radio buttons for "Access Point" and "Client". The "Client" option is selected.
- SSID Name:** A text input field containing "XREY_ALFA".
- Security Type:** A dropdown menu showing "WPA/WPA2".
- Save:** A button at the bottom right.

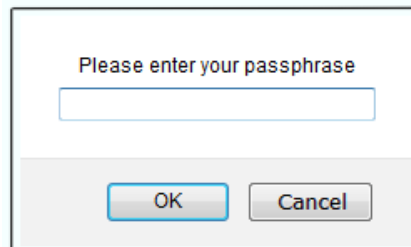
Operation mode of WiFi module inside the GW can also be configured manually. Two modes are available:

- **Client** Standard operation mode. GW is connected to given WiFi network.
- **Access point** For initial GW configuration. This is the default preselected from the factory.

In *Access point* mode, the GW creates a WiFi network with SSID = IQRF-xxxx, where xxxxx are the last 4 characters of MAC address of the GW. This network is not secured. After connection it is possible to accomplish required configuration via internal web interface.

- **SSID name** SSID of WiFi network to be used to connect the GW
- **Security Type** WiFi network security mode
- **Open** Not secured network
- **WEP** Network protected by the WEP security protocol
- **WPA / WPA2** Network protected by the WPA or WPA2 security protocol

Selected configuration should be saved by the *Save* button. If the WiFi network is secured, the access key must be entered.



The dialog box contains the text "Please enter your passphrase" above a text input field. At the bottom, there are two buttons: "OK" and "Cancel".

Then configuration parameters are stored, the GW is restarted and then automatically attempts to connect selected WiFi network.

LAN setup

On this page it is possible to change the name (*Host Name*) for access to the GW which can be used within a local network instead of the IP address. If the DHCP service is available in the network, the *Obtain automatically* checkbox should be activated, otherwise the parameters for access to the LAN network must be selected manually.

In the factory settings, these parameters are obtained automatically from the network using DHCP.

Host Name:	<input type="text" value="iqr-4008"/>
	<input checked="" type="checkbox"/> Obtain automatically
IP Address:	<input type="text" value="192.168.1.9"/>
Subnet Mask:	<input type="text" value="255.255.255.0"/>
Gateway:	<input type="text" value="192.168.1.1"/>
Primary DNS:	<input type="text" value="192.168.1.1"/>
Secondary DNS:	<input type="text" value="0.0.0.0"/>
	<input type="button" value="Save"/>

Operation mode

Mode: Datalogger
 Gateway

Packet Size:

IQRF Cloud Enabled

Period:

[Use IQRF Cloud hosted by CIS](#)

AES Key:

Cloud Path:

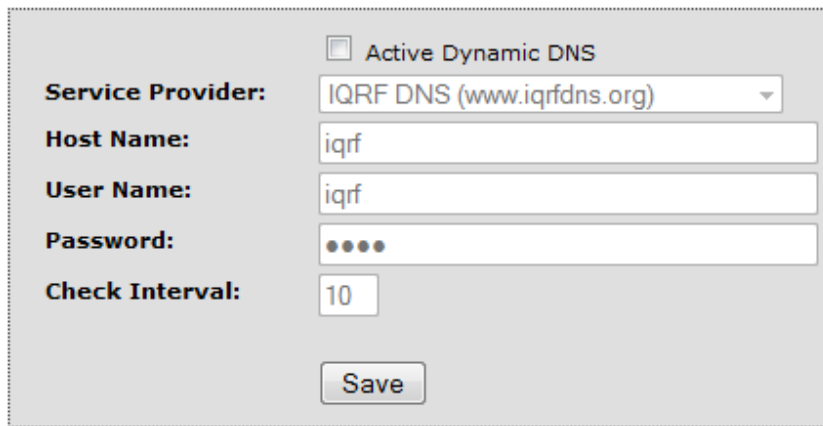
Cloud Port:

GW Port:

Remote Port:

- **Mode**
 - **Datalogger** Activates storing data from IQRF network. This data can be read by the Cloud server (if the communication with the Cloud server is enabled) or using IQRF IDE. This is the default mode preselected from the factory.
 - **Gateway** Enables communication via UDP channel between the GW and a remote system according to the documented application protocol.
- **Packet Size** The size of the user data in IQRF packets. By selecting a smaller value is possible to store a larger number of packets. If the actual IQRF packet is longer, the remaining data is not saved.
- **IQRF Cloud Enabled** Activates the communication with the Cloud server
- **Period** Communication period which GW uploads/downloads data to/from the Cloud server in. Every digit of the double-figure number is set separately.
- **Use IQRF Cloud hosted by CIS** Allows to utilize the ready-to-use IQRF Cloud server hosted by CIS.
- **AES key** Encryption key used for the first connection to the Cloud server
- **Cloud Path** The URL address where IQRF Cloud server is hosted. The '/cloud' substring must follow
- **Cloud Port** The TCP port used. In most cases port 80 is used.
- **GW Port** UDP port for the GW side.
- **Remote port** UDP port for a remote device side.
- **Save** The button to confirm changes and close the window.

Dynamic DNS

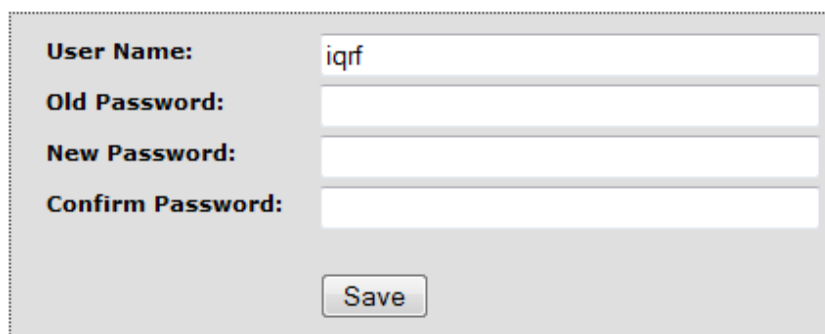


The form is titled "Dynamic DNS" and contains the following fields and controls:

- Active Dynamic DNS
- Service Provider:** IQRF DNS (www.iqrfdns.org) (dropdown menu)
- Host Name:** iqr (text input)
- User Name:** iqr (text input)
- Password:** •••• (password input)
- Check Interval:** 10 (text input)
-

- **Active Dynamic DNS** Activates the GW - DDNS server communication. In the factory settings the DDNS is inactive.
- **Service Provider** DDNS service provider selection
- **Host Name** Name identification of the GW within DDNS
- **User Name** Username for DDNS account
- **Password** Password for DDNS account
- **Check Interval** Communication period between the GW and the Service provider server (in minutes). Minimum value is 10 minutes.

Password



The form is titled "Password" and contains the following fields and controls:

- User Name:** iqr (text input)
- Old Password:** (text input)
- New Password:** (text input)
- Confirm Password:** (text input)
-

Both User name and the Password are default preset to "iqr" from the factory. The password should be changed by the user on the *Password Setup* page. To accomplish the change, the original password and the new one must be entered. For security, the new password must be typed two times.

When the password is forgotten, the factory settings of the GW must be restored by the Control pushbutton (see chapter *Pushbuttons* above). Then the factory preset User name and Password are restored.

Time

Current Date/Time: 27/10/2016 19:45:33 Thu

Manual

Time (hh:mm:ss): : :

Date (dd/mm/yy): / /

SNTP Client

Time Server:

Time Zone:

Use Daylight Savings

The *Time Setup* allows to set the time of the internal clock measured by the GW. The time is required especially for the datalogger. Individual logs are provided with time stamps. The time can be setup manually or via the SNTP service. The SNTP provides periodical time synchronization from one of selected time servers. As a time server, the IQRF Cloud server can be used as well. In the factory settings the time and date are synchronized with the IQRF Cloud server.

Maintenance



- Main Menu returns from the *Maintenance* page to main menu.
- Factory Defaults allows to restore the original factory settings or reboot the gateway.
- Configuration page allows to write / read the GW configuration binary file *.gwcnfg.
- TR upload To program the TR module.
- FW upgrade Allows to upload a new firmware.

Factory Defaults

Factory Defaults & Reboot ?

WARNING:
If it is chosen "Restore factory defaults", GW device will be reset to default factory setting. All actual device settings will be lost. The operation will invoke device rebooting.

Restore factory defaults + Reboot
 Reboot only

- Restore factory defaults + Reboot Restores the GW settings to values preconfigured by the GW manufacturer and reboots the GW.
- Reboot only Reboots the GW (keeping the current GW configuration).
- Execute Launches the operation selected above.

Configuration

File: factory_DDNSnoip_MODEdl.gwcnfg

This page allows to upload the binary configuration file *.gwcnfg or generate this file based on current GW settings. This type of file can be also generated by IQRF IDE GW Tool.

TR upload

File: GeneralHWP-Coordinator-SPI-V201-140602.iqrf

This page allows to reprogram the TR module inside the GW. Supported files are *.hex, *.iqrf and *.trcnfg.

*.trcnfg can be generated by export of TR configuration in IQRF IDE, but **excluding Access password and User key** for encryption, which is allowed to be configured only locally, see chapter *Using IQRF IDE*.

FW Upgrade

File: gwwifi.hex

This page allows to upgrade the GW by a new firmware (file gwwifi.hex) which may be released by IQRF manufacturer and available on the product web page. See chapter *FW upgrade – Bootloader* below.

- Create your user account there and login to this.

The screenshot displays the 'GATEWAY REGISTRATION / EDITING' interface. It features a search bar, view options (Default, Save view), and export options (XLS, PDF, CSV). Below these are two tables showing gateway information. The first table shows 4 items, and the second table also shows 4 items. The gateway details are as follows:

Id	Data	Macros	Redirect
1	0D00002D - GW-GSM-02	Show data / send command (4)	Edit macros (0)
2	11000016 - GW-GSM-02A	Show data / send command (12)	Edit macros (2)
3	12003F20 - Amper	Show data / send command (618476)	Edit macros (6) Redirect
4	12003F78 - GW-ETH-02A	Show data / send command (2857)	Edit macros (1) Redirect

- Add the GW to the List of gateways assigned to your account by the *Add gateway* button. The GW ID and the password must be entered.
- Open the main page of the GW by clicking to the GW ID number.
- Click the *Send data to IQRF* button. The window with predefined LED control commands opens.

The 'Macros' configuration window includes the following elements:

- Macros:** LEDG ON, LEDG OFF
- Add macro** button
- Add:**
 - Index:
 - Data:
 - Gateway password:
 - Format:
- Save** button

- Using the macros or by modification of commands in *IQRF Tx* field and the *Send* button you can control LEDs in individual or all nodes similarly as before (by using IQRF IDE).

Application protocol for UDP channel

UDP protocol is described in separate document *IQRF UDP Technical guide*.

IQRF DNS

IQRF DNS server is provided by the IQRF Tech s.r.o. and is intended as a replacement of the Dynamic DNS server. It allows users a remote connection to an equipment (within Internet) without knowing current public IP address of the equipment. If the equipment is configured and local redirection is set properly, it is possible to use the IQRF DNS names instead of IP addresses of the equipment in web browsers - see the example below. The only thing what the user should know, is the MAC address of the equipment. In following explanation the MAC address 001FD5010203 and IP address 10.100.20.200 are used.

Registering the equipment in the IQRF DNS server database <http://www.iqrfdns.org/?IDIP=001FD5010203>

The GW-WIFI-01 client sends this command automatically and regularly (if this is activated in the GW setup) which keeps a record of MAC address of the equipment and corresponding IP address (for remote GW connecting) in the server database. The server responds with public IP address which the command was sent from. Thus, the equipment finds out its public IP address in the format:

Current IP Address: 10.100.20.200

Request for IP address <http://www.iqrfdns.org/?IP=001FD5010203>

The http client of the user application sends this command to find out the IP address assigned to given MAC address in the server database. The server returns the result in the format:

Requested IP Address: 10.100.20.200

If the MAC address is not found in the database the server returns:

IQRFDNS Message: Requested device is not registered.

Connection to the equipment – redirection <http://www.iqrfdns.org/?ID=001FD5010203>

The command is intended to be entered to the www browser for connection to www interface of the GW-WIFI-01. The server finds requested ID (MAC address) in the database and redirects it to assigned IP address. The GW must have set and activated the IQRF DNS server as the DDNS.

If requested ID is not found the server returns:

IQRFDNS Message: Requested device is not registered.

If there is no answer from the GW after redirection the server returns:

IQRFDNS Message: Device is not responding. It is either offline or its IP address has changed. Try it again after xx:xx min.

Firmware upgrade / Bootloader

GW-WIFI-01 has the bootloader implemented to upgrade the FW by a new version released by the IQRF manufacturer (`gwwifi.hex` file). There are two ways for FW upgrade:

- Store the `gwwifi.hex` file to the SD card using the internal web server (via WiFi). Then the GW performs reset automatically. See chapter *FW upgrade* above.
- Store the `gwwifi.hex` file to the SD card (in the root directory) externally (e.g. from PC using an SD card reader), insert the card into the GW and reset the GW.

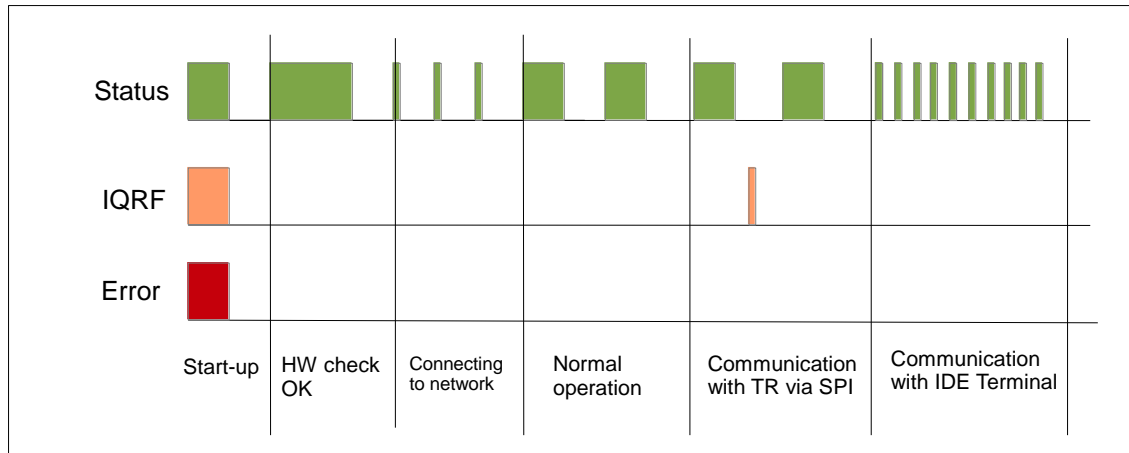
After the reset the upgrade procedure starts.

- If the upgrade is completed, the GW will then be started with the new FW version. To make sure that the upgrade passed successfully, check the current FW version e.g. via the internal web server.
- If the upgrade fails during the *FW checking* phase, the GW will then be started with the original FW version.
- If the upgrade fails during the *FW writing* phase, neither the original nor the new firmware is ready and the GW stays in the Start-up phase. Then, recovery is possible only by FW upgrade from SD card. The user should restore the `gwwifi.hex` file on the SD card before starting the recovery.

See chapter LED indication (*Firmware upgrade and Run operation*) for possible states.

Appendix 1 – LED indication

Run operation



- When the gateway is started-up all LEDs are on for 1 s.

If the GW is switched on by connecting the USB cable to PC with IQRF IDE running, the GW detection by IDE takes about 5 s.

- After the start up the gateway performs a check of its hardware. If there is no problem in HW, the green LED is on for 2 s.
- After HW check, the gateway is connecting to WiFi/LAN (and to Cloud server, if enabled). This is indicated by short flashing of green LED, 100 ms on / 1 s off.
- When the GW is successfully connected the green LED flashes 500 ms on / 500ms off. The GW works in normal mode.
- When the gateway is connected to IQRF IDE Terminal, the communication over WiFi is disabled (SPI communication is forwarded to the Terminal but not to the Cloud). This mode is indicated by short flashes of green LED, 100 ms on / 100 ms off.
- When the GW is connected to IQRF IDE GW Tool, the communication via WiFi is not limited. The GW works in normal mode.
- When the GW communicates with TR module, orange LED flashes for 10 ms.

Start-up errors

After the start-up the GW performs hardware check. If there is a critical error prohibiting basic functionality, the GW goes to error state, see below. This is indicated by red LED permanently on.

Run errors

If the gateway is at least partially operable or if an error occurs during its operation it continues the execution and indicates the run error.



During run error red LED is continuously on. Green LED flashes with the specific duty:

- Run error 1 10 ms on, 1 s off
- Run error 2 100 ms on, 100ms off
- Run error 3 500 ms on, 500 ms off

Run error 1

- WiFi start error WiFi interface fatal error
- LAN service error Some of LAN services failed
- Connection error Connection with IQRF Cloud server failed (in the Datalogger mode only)
- Registration error Registration to IQRF Cloud server failed (in the Datalogger mode only)
- Upload error Error when uploading data to IQRF Cloud server (in the Datalogger mode only)
- Download error Error when downloading data from IQRF Cloud server (in the Datalogger mode only)

When the gateway indicates Run error 1, it is not able to communicate with the Cloud server due to one of previous reasons, but it is still possible to receive and save data from IQRF side. To detect the Run error 1, the gateway must be connected to IQRF IDE GW Tool with the *Status* tab opened where the error type can be read.

Run error 2

- IQRF SPI error IQRF TR module is not responding.

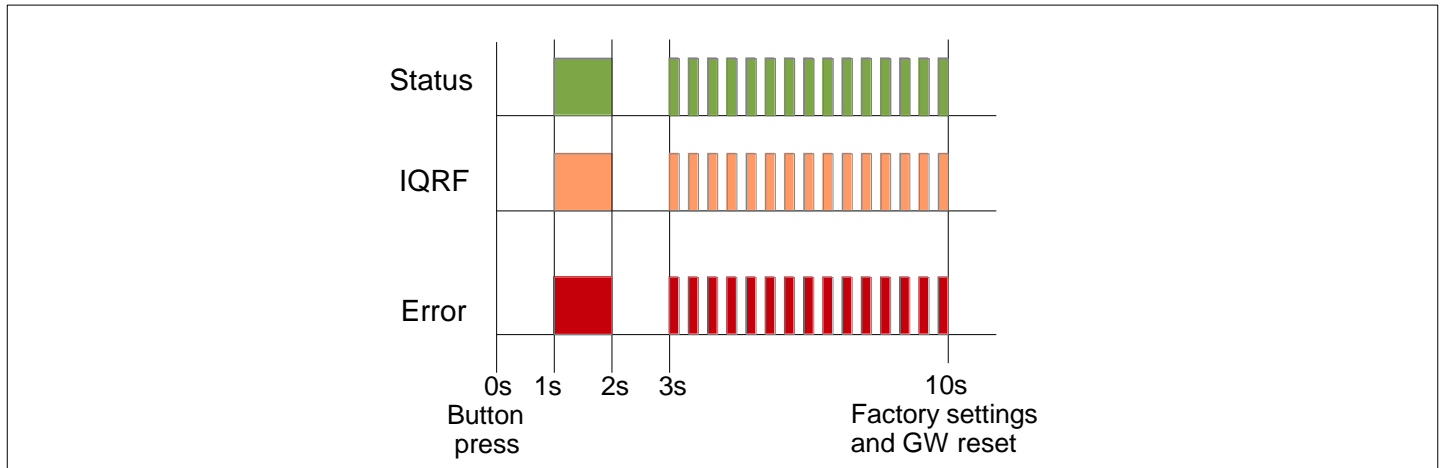
When the gateway indicates Run error 2, it is not able to communicate with the IQRF side, nevertheless the communication with IQRF Cloud server is not affected

Run error 3

- SD card error

Factory setting and turning the GW off

To restore the setting from the factory or to switch the GW off, the following procedure should be applied:



Factory settings

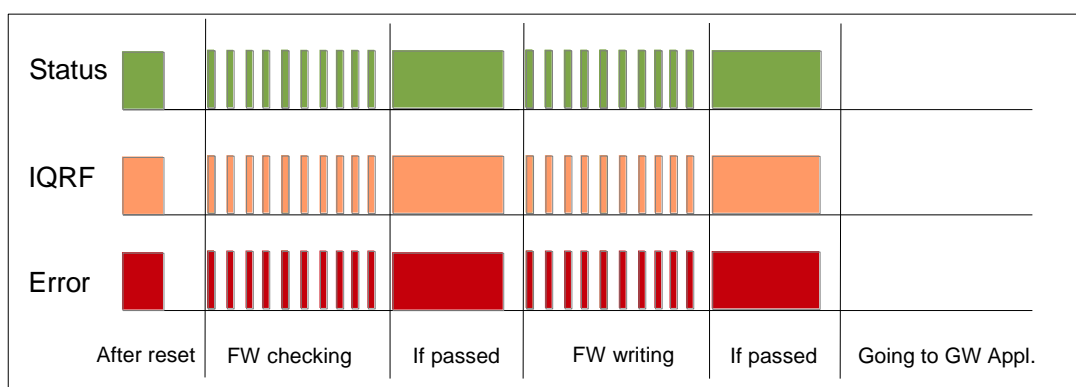
- At Time = 0 The user is pressing and holding the button.
- At Time = 1 s to 2 s All LEDs are on.
- At Time = 2 s to 3 s All LEDs are off.
- At Time = 3 s to 10 s All LEDs flashing 100 ms on, 100 ms.
- At Time = 10 s All LEDs are off, the GW factory setting is restored and the GW is reset.

Turning off

- If the button was released at time 0 s to 1 s, this procedure is canceled and the GW returns to run mode.
- If the button was released at time 1 s to 10 s, the GW is turned off.

Firmware upgrade

In the first step the stored hex file is checking for errors. If no errors occur the content of the hex files is written to the main MCU. Both of these events are indicated by 20 Hz synchronous flashing of all LEDs. If the hex file checking fails, the GW will be started with the original FW version. If the hex file writing is successful, the GW will be started with the new FW version.



Product information

Pack list

- GW-WIFI-01 gateway
- TR module (DC)TR-72DA or DCTR-52DA inside, with (General)HWP-Coordinator-STD-SPI hardware profile uploaded
- WiFi antenna with SMA connector
- Accumulator Li-Ion, 3.7 V, 700m Ah inside
- Power source TY-A6 (5V DC, 500 mA, with USB connector, compatible with cable CAB-USBABMICRO)
- MicroUSB cable CAB-USBABMICRO
- SD card

Ordering code

- GW-WIFI-01 (72D) IQRF WiFi gateway, (DC)TR-72DA inside
- GW-WIFI-01 (52D) IQRF WiFi gateway, DCTR-52DA inside

Hardware revision

- v1.02 First release.

Firmware history

- v3.12 IQRF OS v4.02D supported. Timing in communication with TR transceiver slightly corrected.
- v3.10 Fixed a bug in LED indication ("Connecting to network" state omitted in gateway mode). Password is not visible while entering via web server.
- v3.09 A bug in UDP communication with IQRF IDE fixed.
- v3.08 First release.

Document history

- 180511 UDP protocol description transferred into separate document *IQRF UDP Technical guide*.
- 171013 Updated for FW v3.12.
- 170814 Updated for FW v3.10.
- 170414 Possibilities of changing of Access password and User key precised.
- 170404 First release.

Sales and Service

Corporate office

IQRF Tech s.r.o., Prumyslova 1275, 506 01 Jicin, Czech Republic, EU
Tel: +420 493 538 125, Fax: +420 493 538 126, www.iqrf.tech
E-mail (commercial matters): sales@iqrf.org

Technology and development

www.iqrf.org
E-mail (technical matters): support@iqrf.org

Partners and distribution

www.iqrf.org/partners

Quality management

ISO 9001 : 2009 certified

Complies with directives 2011/65/EU (RoHS) and 2012/19/EU (WEEE).



Trademarks

The IQRF name and logo are registered trademarks of IQRF Tech s.r.o.
PIC, SPI, Microchip and all other trademarks mentioned herein are property of their respective owners.

Legal

All information contained in this publication is intended through suggestion only and may be superseded by updates without prior notice. No representation or warranty is given and no liability is assumed by IQRF Tech s.r.o. with respect to the accuracy or use of such information.

Without written permission, it is not allowed to copy or reproduce this information, even partially.

No licenses are conveyed, implicitly or otherwise, under any intellectual property rights.

The IQRF® products utilize several patents (CZ, EU, US).

On-line support: support@iqrf.org



Smarter Wireless. Simply.